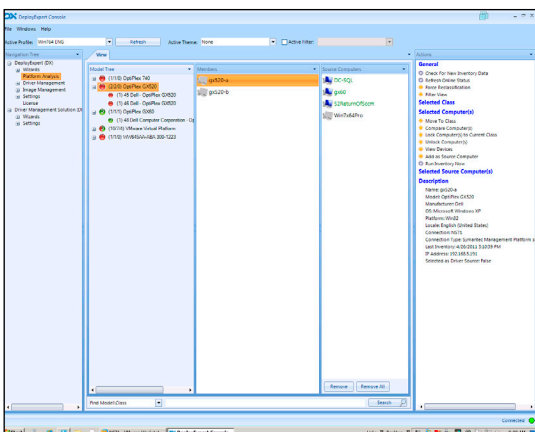


Hardware Independent Deployment Automation and Migration

Deploy Expert (DX) is a Symantec Management Platform (SMP 7.1) integrated process management solution for hardware independent image deployment (HID) and Windows OS migrations. DX reduces the workload and time required to achieve and maintain an enterprise HID capability by up to 95%. Whether you are deploying Windows 7, XP, 2003 or 2008 Server, the DX solution is seamlessly integrated into the SMP 7.1 console presenting administrators with an intuitive GUI that manages a simple 4-step process to automatically perform system hardware inventory analysis, driver pack gathering, deployment solution job integration and change maintenance.



The DX 4-Step Process:

Step 1 – **Analyze**

Experienced Administrators know that basing your hardware independent image strategy on “OEM model” types is not granular enough – you must know what devices actually exist under the hood in order to know what device drivers are needed for zero touch deployment. For the first time ever, you will see distinct hardware platform groupings that exist in your enterprise. These “Platform Classes” include only systems that are exactly identical based on “under the hood hardware analysis” and therefore capable of sharing a driver pack. Administrators can utilize this information to know what systems are ready for zero touch OS deployment and more importantly what systems are not ready.

Step 2 – **Harvest**

No matter what type of drivers are required by any system in your enterprise, DX quickly obtains and maps the best driver for you. DX’s Harvest feature allows you to quickly integrate a comprehensive driver pack library that is automatically mapped to each system, enterprise wide. Even systems that require special peripherals and non-OEM component device drivers are managed. Each unique device driver resource is “single-instance” stored in DX’s driver repository, keeping your driver library lean and easily manageable.

Step 3 – **Integrate**

DX seamlessly integrates all required drivers and hardware-specific application “intelligence” into a Deployment Solution 7.1 job resulting in true “Zero Touch” deployments, making partial deployments and deployment failures a thing of the past.

Step 4 – **Maintenance**

DX regularly analyzes the SMP’s hardware inventory so that brand new systems and device adds/moves/changes are programmatically added or modified while you sleep. This ensures all systems remain deployment ready.